

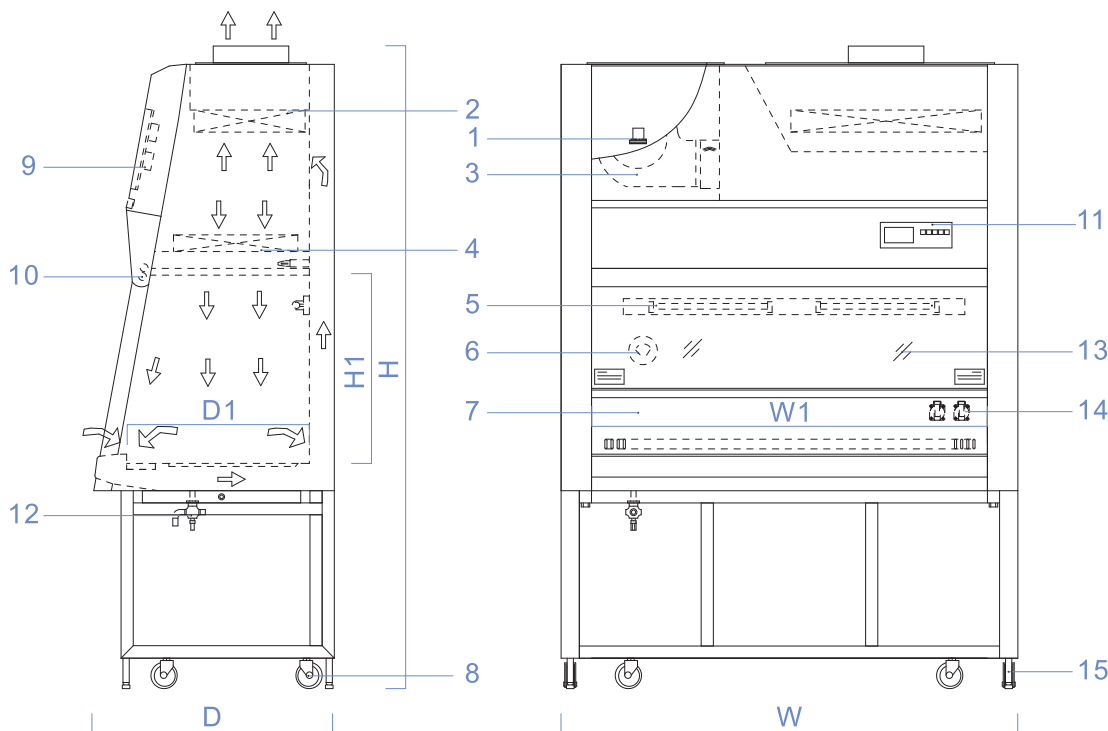
BSC-1302IIA2 Biosafety Cabinet



Scan here for
official certification



AIRTECH



1. Power Switch
2. Air Exhaust HEPA
3. Fan Unit
4. Air Supply HEPA
5. UV Lamp
6. Pressure Gauge
7. SUS Chamber
8. Universal Wheel
9. Elec. Box
10. Light
11. Control Panel
12. Blowoff Valve
13. Sliding door
14. Spare Socket
15. Adjustable Levelling Foot

Specification



Scan here for
official certification

Model	BSC-1302IIA2
Filtration Efficiency	HEPA: ≥99.995%, @ 0.3µm/ULPA: ≥99.995%, @ 0.12µm
Downflow Velocity	0.35 m/s (68.88 fpm)
Inflow Velocity	0.54 m/s (106.27 fpm)
Noise	≤67 dB(A)
Vibration	≤5µm (center of table top)
Power Supply	AC230 V, 1Ø, 50/60 Hz
Opening Height	250 mm
Personnel Protection	a. Total colony in impaction sampler ≤10 CFU./time b. Total colony slot sampler ≤5 CFU./time
Product Protection	Total colony in culture dish ≤5 CFU./time
Cross-contamination Protection	Total colony in culture dish ≤2 CFU./time
Rated Power (without spare socket)	0.46 kVA
Weight	300 kg
Work Dimension (W x D x H)	1270 x 600 x 620 mm
Overall Dimension (W x D x H)	1500 x 790 x 2050 mm
Size and Quantity of Light	LED 24.5 W x (2)
Size and Quantity of UV Light	15 W x (2)
Lumination	≥750 Lx
Cabinet Materials	High-grade steel and lacquered in ivory
Working Area Materials	SS304 fully finished
Air Direction	Top out

BSC-1003/1303/1603IIA2 Biosafety Cabinet

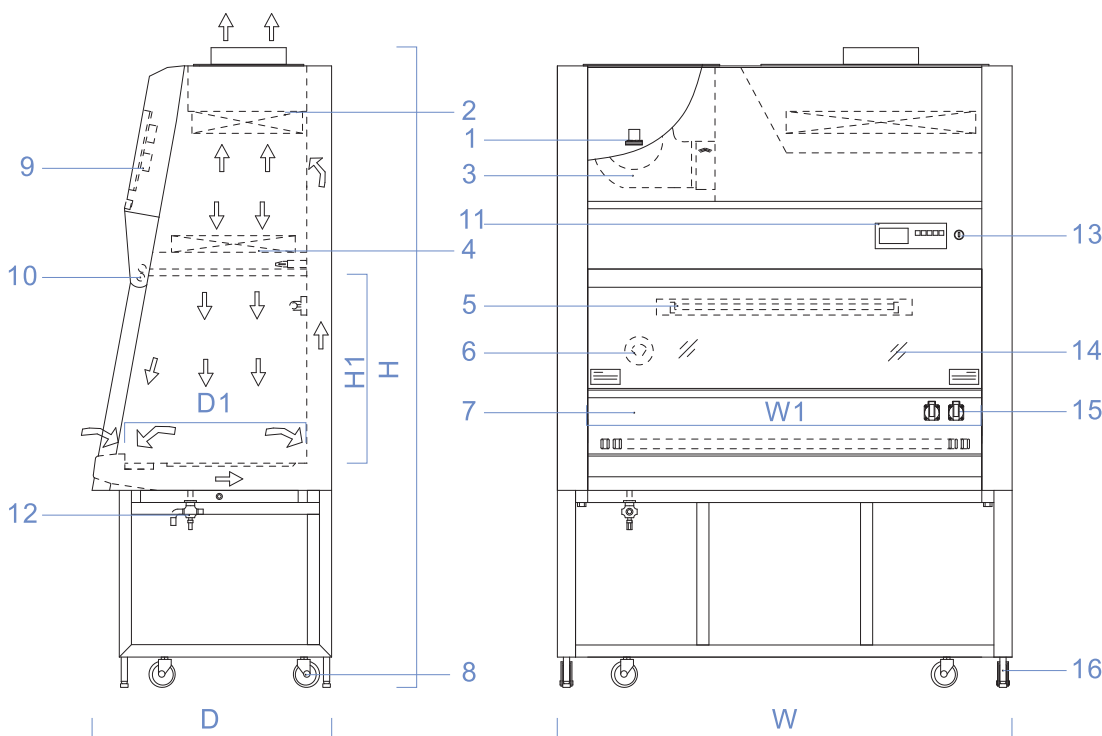


Scan here for official certification



EN 12469:2000

AIRTECH



1. Power Switch
2. Air Exhaust HEPA
3. Fan Unit
4. Air Supply HEPA
5. UV Lamp
6. Service Fixture
7. SUS Chamber
8. Universal Wheel
9. Elec. Box
10. Light
11. Control Panel
12. Blowoff Valve
13. Key
14. Sliding door
15. Spare Socket
16. Adjustable Levelling Foot

Specification



Scan here for
official certification

Model	BSC-1003IIA2	BSC-1303IIA2	BSC-1603IIA2
Filtration Efficiency	HEPA: ≥99.995%, @ 0.3µm/ ULPA: ≥99.995%, @ 0.12µm		
Downflow Velocity	0.35 m/s (68.88 fpm)		
Inflow Velocity	0.55 m/s (108.24 fpm)		
Noise	≤65 dB(A)		
Vibration	≤5µm (center of table top)		
Power Supply	AC220~240 V, 1ø, 50/60 Hz		
Opening Height	200 mm		
Personnel Protection	a. Total colony in impaction sampler ≤10 CFU./time b. Total colony in slot sampler ≤5 CFU./time		
Product Protection	Total colony in culture dish ≤5 CFU./time		
Cross-contamination Protection	Total colony in culture dish ≤2 CFU./time		
Max Consumption (with spare socket)	1.5 kVA	1.5 kVA	1.8 kVA
Rated Power (without spare socket)	0.50 kVA	0.54 kVA	0.75 kVA
Weight	280 kg	300 kg	320 kg
Work Dimension (W x D x H)	970 x 600 x 620 mm	1270 x 600 x 620 mm	1570x 600 x 620 mm
Overall Dimension (W x D x H)	1200 x 790 x 2050 mm	1500 x 790 x 2050 mm	1800 x 790 x 2050 mm
Size and Quantity of Light	LED 24.5 W x (1)	LED 31 W x (1)	LED 36 W x (1)
Size and Quantity of UV Light	18 W x (1)	30 W x (1)	36 W x (1)
Lumination	≥750 Lx		
Cabinet Materials	High-grade steel and lacquered in ivory		
Working Area Materials	SS304 fully finished		
Air Direction	Top out		

BSC-1004/1304/1604/1804IIA2 Biosafety Cabinet

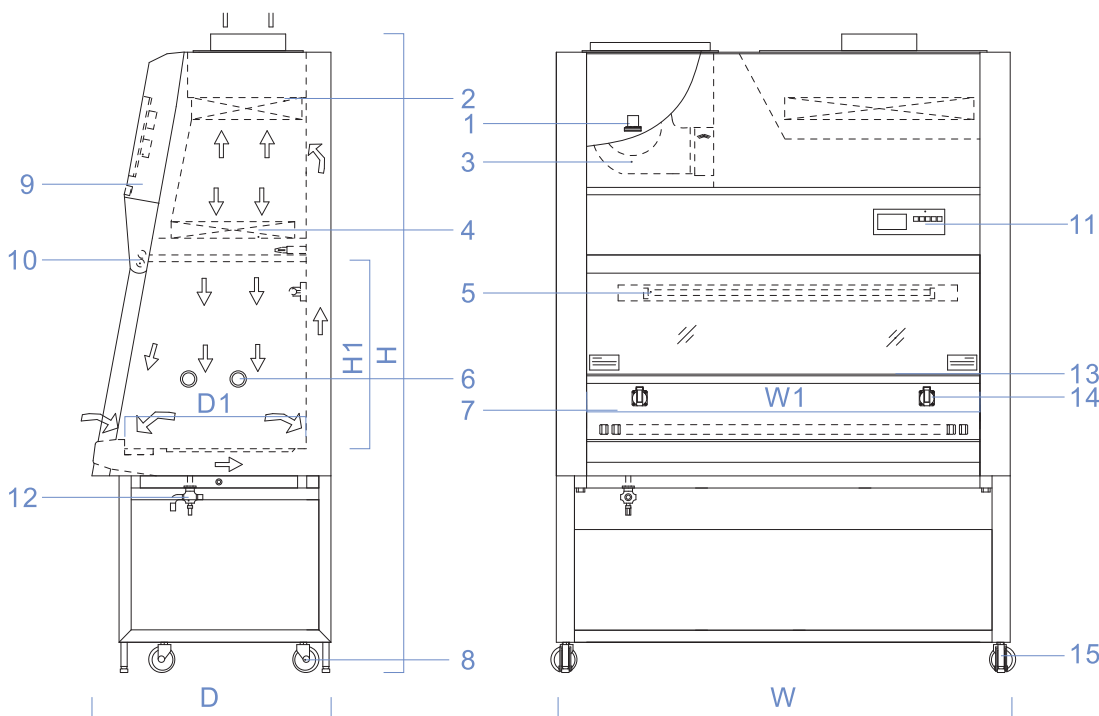


Scan here for official certification



CE

AIRTECH



1. Power Switch
2. Air Exhaust HEPA
3. Fan Unit
4. Air Supply HEPA
5. UV Lamp
6. Service Fixture
7. SUS Chamber
8. Universal Wheel
9. Elec. Box
10. Light
11. Control Panel
12. Blowoff Valve
13. Sliding door
14. Spare Socket
15. Adjustable Levelling Foot

Specification



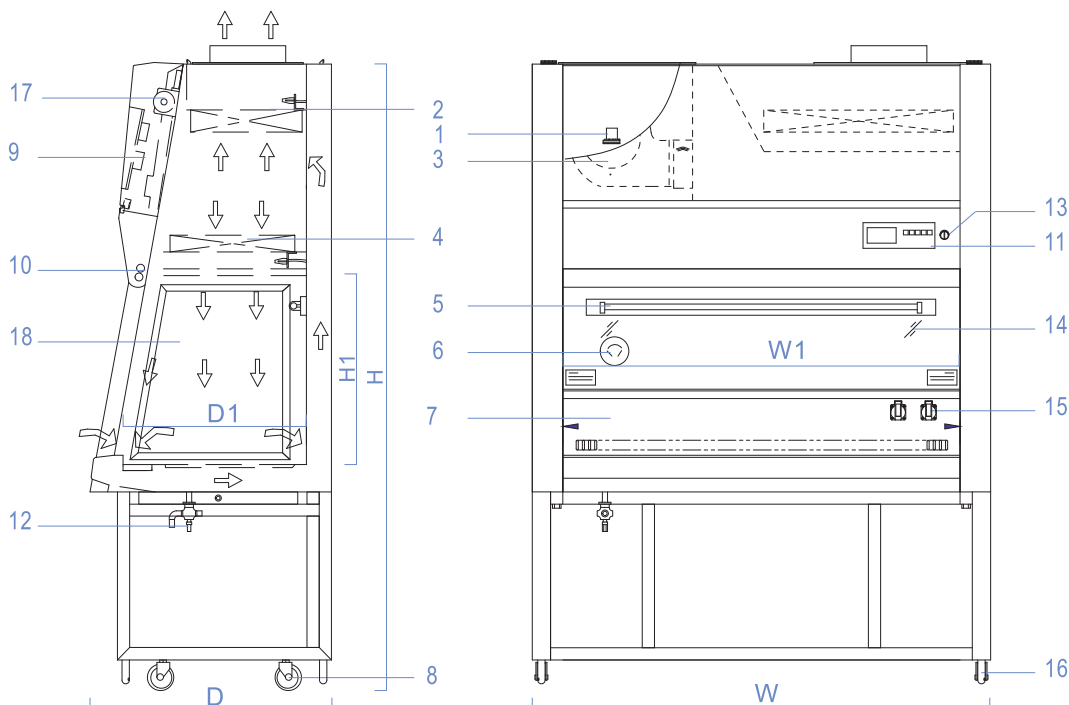
Scan here for
official certification

Model	BSC-1004IIA2	BSC-1304IIA2	BSC-1604IIA2	BSC-1804IIA2
Filtration Efficiency	ULPA: ≥99.995%, @ 0.12µm			
Downflow Velocity	0.35 m/s (68.88 fpm)			0.33 m/s (64.94 fpm)
Inflow Velocity	0.55 m/s (108.24 fpm)			0.53 m/s (104.30 fpm)
Noise	58-65 dB(A)			
Vibration	≤5µm (center of table top)			
Power Supply	AC220 V, 1ø, 50 Hz			
Opening Height	200 mm			
Personnel Protection	a. Total colony in impaction sampler ≤10 CFU./time b. Total colony in slot sampler ≤5 CFU./time			
Product Protection	Total colony in culture dish ≤5 CFU./time			
Cross-contamination Protection	Total colony in culture dish ≤2 CFU./time			
Max Consumption (with spare socket)	1.65 kVA	1.75 kVA	1.85 kVA	1.85 kVA
Rated Power (without spare socket)	0.33 kVA	0.43 kVA	0.53 kVA	0.53 kVA
Weight	260 kg	300 kg	360 kg	400 kg
Work Dimension (W x D x H)	1004 x 630 x 630 mm	1304 x 630 x 630 mm	1604 x 630 x 630 mm	1804 x 630 x 630 mm
Overall Dimension (W x D x H)	1200 x 795 x 2050 mm	1500 x 795 x 2050 mm	1800 x 795 x 2050 mm	2000 x 795 x 2050 mm
Size and Quantity of Light	LED 24.5 W x (1)	LED 31 W x (1)	LED 36 W x (1)	LED 36 W x (1)
Size and Quantity of UV Light	18 W x (1)	30 W x (1)	36 W x (1)	36 W x (1)
Lumination	≥900 Lx			
Cabinet Materials	High-grade steel and lacquered in ivory			
Working Area Materials	SS304 fully finished			
Air Direction	Top out			

BSC-1003/1303/1603IIA2-S Biosafety Cabinet



AIRTECH

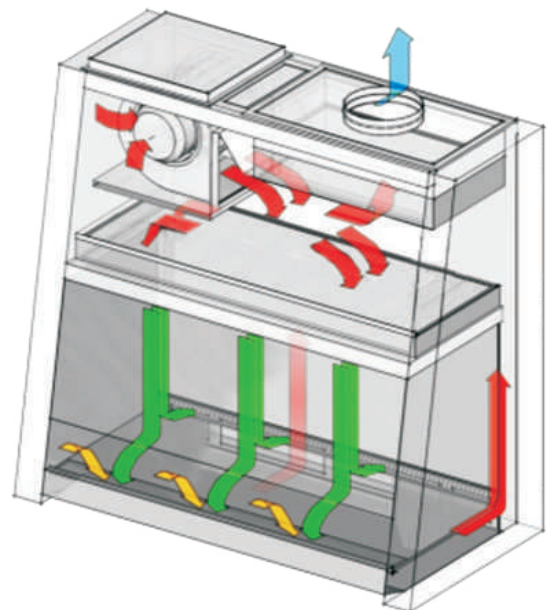
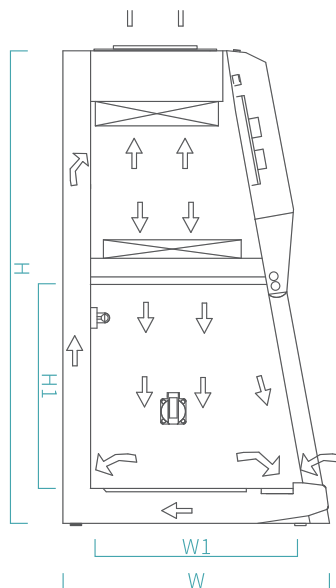
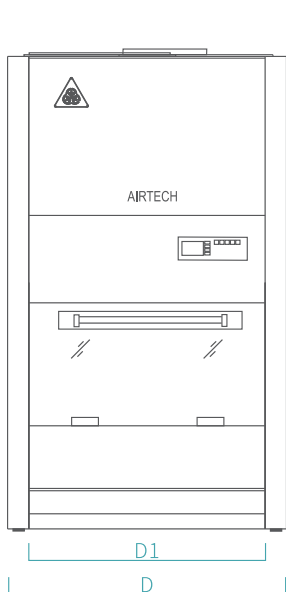


1. Power Switch
2. Air Exhaust HEPA
3. Fan Unit
4. Air Supply HEPA
5. Light On-Duty
6. Pressure Gauge
7. SUS Chamber
8. Universal Wheel
9. Elec. Box
10. Light
11. Control Panel
12. Blowoff Valve
13. Key
14. Sliding Door
15. Spare Socket
16. Adjustable Leveling Foot
17. Motorized Mechanism
18. Side Glass

Specification

Model	BSC-1003IIA2-S	BSC-1303IIA2-S	BSC-1603IIA2-S
Filtration Efficiency	HEPA: ≥99.995%, @ 0.3µm/ULPA: ≥99.995%, @ 0.12µm		
Downflow Velocity	0.35 m/s (68.88 fpm)		
Inflow Velocity	0.55 m/s (108.24 fpm)		
Noise	≤65 dB(A)		
Vibration	≤5µm (center of table top)		
Power Supply	AC220-240 V, 1ø, 50/60 Hz		
Opening Height	200 mm		
Personnel Protection	a. Total colony in impaction sampler ≤10 CFU./time b. Total colony in slot sampler ≤5 CFU./time		
Product Protection	Total colony in culture dish ≤5 CFU./time		
Cross-contamination Protection	Total colony in culture dish ≤2 CFU./time		
Max Consumption (with spare socket)	1.5 kVA	1.5 kVA	1.8 kVA
Rated Power (without spare socket)	0.50 kVA	0.54 kVA	0.75 kVA
Weight	280 kg	300 kg	320 kg
Work Dimension (W x D x H)	970 x 600 x 620 mm	1270 x 600 x 620 mm	1570 x 600 x 620 mm
Overall Dimension (W x D x H)	1200 x 790 x 2050 mm	1500 x 790 x 2050 mm	1800 x 790 x 2050 mm
Size and Quantity of Light	LED 24.5 W x (1)	LED 31 W x (1)	LED 36 W x (1)
Size and Quantity of UV Light	18 W x (1)	30 W x (1)	36 W x (1)
Lumination	≥750 Lx		
Cabinet Materials	High-grade steel and lacquered in ivory		
Working Area Materials	SS304 fully finished		
Air Direction	Top out		
Plug Style	Europe Type (AC 250 V/10 A)		
Quantity of Spare Socket	Europe Type (AC 250 V/2 A) x (2)		

BSC-AT0650IIA2 Biosafety Cabinet



Specification

Model	BSC-AT0650IIA2
Filtration Efficiency	≥99.995%, @ 0.3µm
Downflow Velocity	0.33 m/s
Inflow Velocity	0.53 m/s
Noise	≤63 dB(A)
Vibration	≤5µm (center of table top)
Power Supply	AC220-240 V, 1Ø, 50/60 Hz
Opening Height	200 mm
Personnel Protection	a. Total colony in impaction sampler ≤10 CFU./time b. Total colony in slot sampler ≤5 CFU./time
Product Protection	Total colony in culture dish ≤5 CFU./time
Cross-contamination Protection	Total colony in culture dish ≤2 CFU./time
Max Consumption (with spare socket)	0.81 kVA
Rated Power (without spare socket)	0.15 kVA
Weight	110 kg
Work Dimension (W x D x H)	650 x 562 x 540 mm
Overall Dimension (W x D x H)	750 x 700 x 1200 mm
Size and Quantity of Light	LED 13 W x (1)
Size and Quantity of UV Light	8 W x (1)
Lumination	≥900 Lx
Cabinet Materials	High-grade steel and lacquered in ivory
Working Area Materials	SS304 fully finished
Air Direction	Top out

